

Simple. Smart. Powerful.

The AirAllow Cloud Connector adds WIFI connectivity to the access network, enabling remote and app-less unlock.

STEP 1 - CONNECT THE FIRESTICK

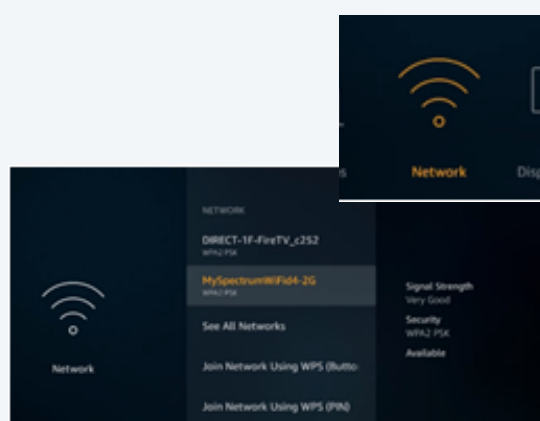
- Plug in the firestick USB power
- Connect the firestick HDMI to a monitor or tv.

The Cloud Connector automatically launches, and the sign-in page appears.



STEP 2 - SETUP LOCAL WIFI

- Using the remote, press the Home > Settings > Network
- Select your local network SSID
- Enter the network password



The firestick needs the monitor only to set up the local WIFI settings and AirAllow sign-in credentials. Afterward, the stick can be moved closer to the SGS Controller if out of range.

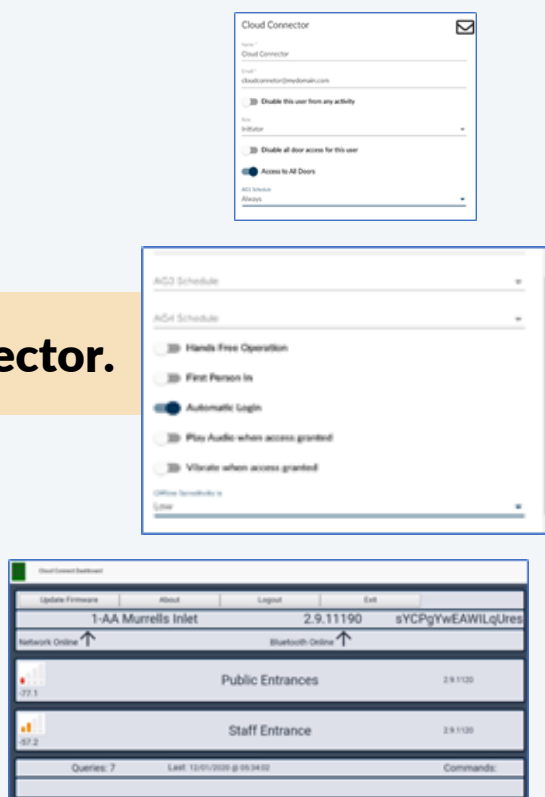
The stick confirms the WIFI connection.

STEP 3 - ADD A USER

- From the portal or app, add a new user to the site.

The user's credentials secure the cloud connector.

- Set the user's role to the **initiator**
- Enable **automatic login**
- Set Offline Sensitivity to low.
- Save the user.



STEP 4 - SIGN INTO THE CLOUD CONNECTOR

- Sign in to the cloud connector with the new user's credentials.

The cloud connector dashboard appears.

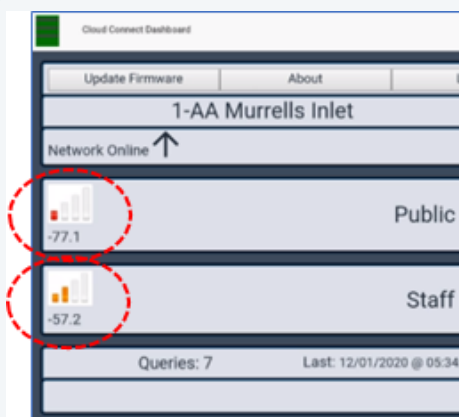


NEXT - CONFIRM CONNECTIVITY AND RELOCATE THE CONNECTOR IF NECESSARY.

Confirm connectivity to the SGS door controllers by checking the signal level on the Cloud Connector Dashboard. Once confirmed that they are in range, refresh the door configuration, and perform a remote unlock to verify things are working properly.

STEP 5 - CONFIRM CONNECTIVITY

- Verify that the signal is at least red and that the no signal indicator is not present.
- If necessary, move the connector









STEP 6 - REFRESH THE SGS

- Make sure all Enclave apps are turned off or out of range of the SGS controllers.

This assures that the cloud connector is issuing commands to the SGS Door Controllers.

- Refresh the SGS door controller Menu > Setup > Doors >
- Click the refresh icon.
- Wait for the "refresh requested," "refresh started," and "refresh completed" events to appear in the audit trail.

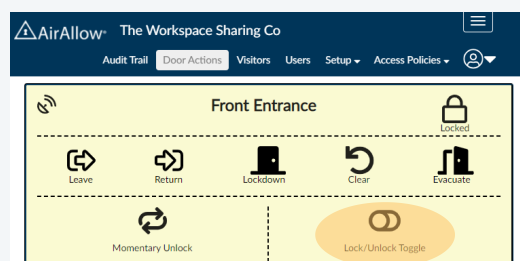
Title	Serial Number	Description	Firmware Version	Modify / Refresh / Move
Public Entrances	00000217		2.9.1205	  
Staff Entrance	00001000	Testing SGS 1000	2.9.1205	  

When ↓	Who	What	Where
Jan 12, 2021, 5:38:49 AM	1610447905300	Refresh Completed	Public Entrances
Jan 12, 2021, 5:38:25 AM	1610447905300	Refresh Started	Public Entrances
Jan 12, 2021, 5:38:21 AM	SGS	Full Refresh Requested	00000217

If the refresh does not start or complete, re-verify signal strength connectivity. Move the connector closer to the SGS if necessary.

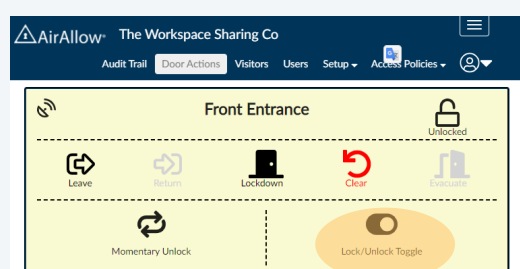
STEP 7 - PERFORM REMOTE ACTIONS

- Click the Lock/Unlock Toggle icon.
The door unlocks and stays unlocked. The Clear icon turns red, and the Evacuate icon is gray.



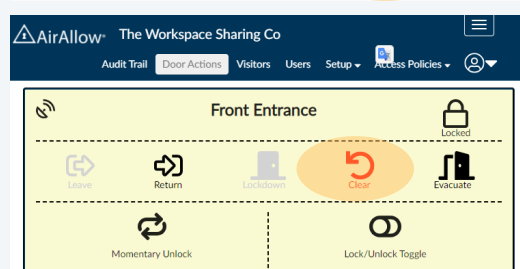
The door is now "forced" unlocked.

- Click the Lock/Unlock Toggle again.
The door locks and stays locked.



The door is now "forced" locked.

- Click the Clear icon.
The door returns to its regularly scheduled state.



To keep optimal performance and automated Amazon updates, the firestick is restarted nightly. The TP-Link smart plug is used for this purpose via an off/on schedule. Although shipped with a schedule set, it is recommended that the installer connect and confirm that schedule and connect to the local site Wifi.

STEP 1 - LEARN ABOUT TP-LINK

Watch the TP-LINK Videos

[Click for Setup](#)

[Click for Scheduling](#)

Read the TP-LINK Guides

[Click for Setup](#)

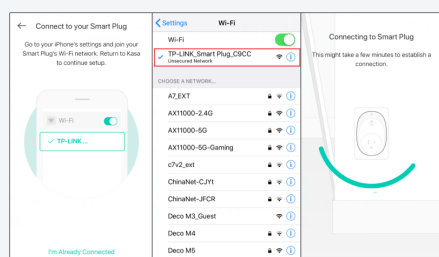
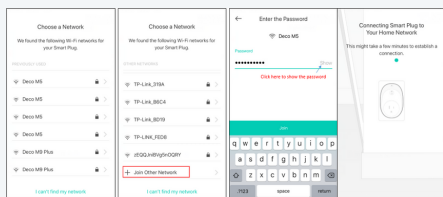
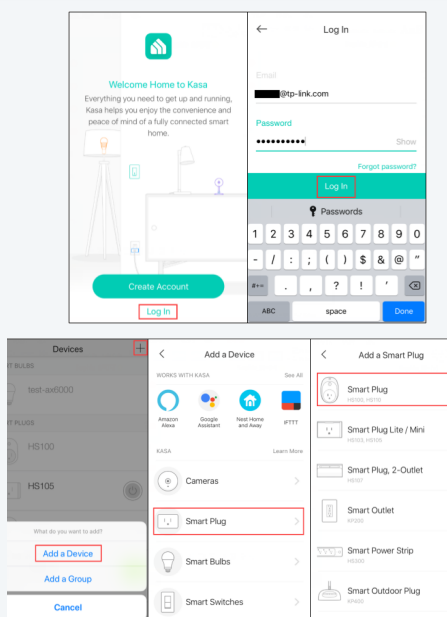
[Click for Scheduling](#)

STEP 2 - CONNECT THE TP-LINK

For the latest setup videos and guides, look on the tp-link.com support site.

- Download the Kasa App
- Connect your phone to the local Wifi
- Plug the TP-Link plug into the wall
- Log into the Kasa app
- Add the TP-Link device
- Check the Wifi light
- Connect the phone to the TP-LINK wifi
- Connect the plug to the local network
- Name the device

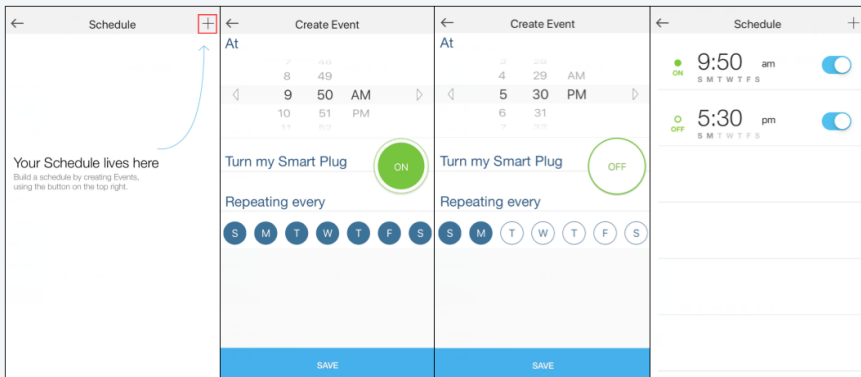
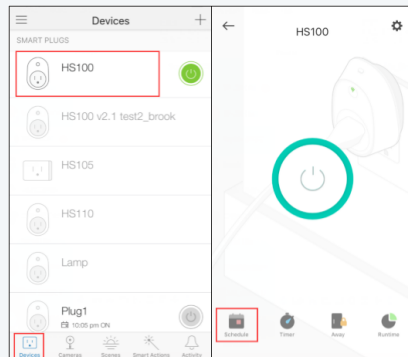
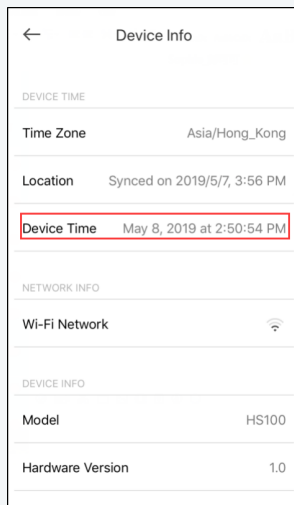
First-time Kasa users must register an account.



STEP 3 - SET THE SCHEDULE

For the latest setup videos and guides, look on the tp-link.com support site.

- Confirm the time is correct on the plug
- Select the TP-Link plug
- Click on the schedule icon
- Add an OFF schedule for the plug
- Set it for 3:05 am, repeat every day
- Add an ON schedule for the plug
- Set it for 3:06 am, repeat every day
- Save the schedules



Simple. Smart. Powerful.

The AirAllow Cloud Connector adds WIFI connectivity to the access network, enabling remote and app-less unlock.

Features

- **No app download needed with App-less Unlock:** simplify temporary access by giving invited users a way to unlock a door by clicking a web-link. This is ideal for short-term and temporary access, such as contractors and delivery personnel.
- **Instant Remote Unlock from Anywhere:** Instantly remotely unlock a door from anywhere via the AirAllow Admin Portal or Enclave App.
- **Multiple Network Paths:** Multiple network pathways improve reliability and responsiveness to policy changes and remote actions such as unlock.
- **Connects to multiple doors:** The AirAllow Cloud Connector communicates with any number of SGS door controllers.
- **Remotely Manage:** remotely manage users, schedules, and other access policies from Admin Web Portal or Enclave App.
- **Remotely Monitor:** monitor access activities in real-time.
- **Remotely Act:** remotely unlock a door and more.
- **Emergency Response Advanced Actions:** advanced actions used for emergency response.
- **Cloud Stored Audit Trail:** track all activities stored in the cloud for 1 year. Use quick search or export to CSV.
- **Invitation System:** Automatically email invitations to users & visitors with one click.
- **Future Proof:** without changing hardware, upgrade to a feature-rich subscription as your access control needs grow.
- **Amazon Firestick:** The AirAllow Cloud Connector runs on Amazon's firestick, a proven and robust platform.

Specifications



The AirAllow Cloud Connector adds WIFI connectivity to your access network. Remotely unlock, invite visitors, and control tenant and staff access from anywhere. Now users no longer need to download an app; they simply click and go with app-less unlock. Multiple network pathways improve reliability and responsiveness to policy changes and remote actions such as unlock.

Bluetooth / BLE Range: up to 30 feet

WIFI Range: up to 100 feet

Maximum doors connected: 4 doors

Hardware: Amazon Firestick Lite preloaded with the Cloud Connect App

Electrical: refer to the Firestick manufacturer's specifications

Mechanical: refer to the Firestick manufacturer's specifications

Warranty: refer to the Firestick manufacturer's warranty